

90 DAY LIMITED WARRANTY

Winegard Company warrants this Winegard product against any defects in materials or workmanship within 90 (ninety) days from date of purchase. No warranty claim will be honored unless at the time the claim is made, you present proof of purchase to an authorized Winegard dealer (if unknown, please contact Winegard Company, 3000 Kirkwood Street, Burlington, IA 52601-2000, Telephone 800-288-8094).

Winegard Company (at its option) will either repair or replace the defective product at no charge to you. This warranty covers parts, but does not cover any costs incurred in removal, shipping or reinstallation of the product. This limited warranty does not apply if the product is damaged, deteriorates, malfunctions or fails from: misuse, improper installation, abuse, neglect, accident, tampering, modification of the product as originally manufactured by Winegard, usage not in accordance with product instructions or acts of nature such as damage caused by wind, lightning, ice or corrosive environments such as salt spray and acid rain.

The 90 Day Warranty is provided on the condition that the equipment is properly delivered with all handling and freight charges prepaid to your Winegard dealer for return to our factory for repair or replacement. Winegard dealers will arrange for the replacement or repair and return to you without charge the product which failed due to defective material or workmanship.

WINEGARD COMPANY WILL NOT ASSUME ANY LIABILITIES FOR ANY OTHER WARRANTIES, EXPRESS OR IMPLIED, MADE BY ANY OTHER PERSON.

ALL OTHER WARRANTIES WHETHER EXPRESS, IMPLIED OR STATUTORY INCLUDING WARRANTIES OF FITNESS FOR A PARTICULAR PURPOSE AND MERCHANTABILITY ARE LIMITED TO THE 90-DAY PERIOD OF THIS WARRANTY.

The foregoing shall be the sole and exclusive remedy of any person, whether in contract, tort or otherwise, and Winegard shall not be liable for incidental or consequential damage or commercial loss, or from any other loss or damage except as set forth above.

Some states do not allow limitations on how long an implied warranty lasts, or the exclusion of limitation of incidental or consequential damages, so the above limitations or exclusions may not apply to you.

This warranty gives you specific legal rights and you may also have other rights which vary from state to state.

Rev. 2/08

HOW TO PROVIDE LIGHTNING PROTECTION FOR TV ANTENNA AND SET

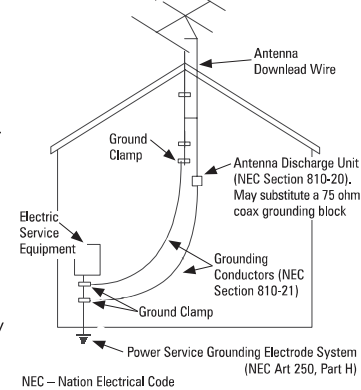
Step 1. Mount the lightning arrester or 75 ohm coaxial grounding block as close as possible to where the 75 ohm coaxial cable download enters the house.

Step 2. The ground wires for both the mast and the download should be copper or aluminum wire, number eight (8) or larger.

Step 3. The download wire from the antenna to the lightning arrester and the mast ground wire should be secured to the house, spaced from four (4) to six (6) feet apart.

NOTE: In the case of a "ground up" antenna installation, it may not be necessary to ground the mast if the mast extends four or more feet into the earth. Consult a TV serviceman for the proper depth in your location.

LIGHTNING PROTECTION - Example of Antenna Grounding (as per National Electrical Code, ANSI/NFPA 70)



Printed in U.S.A. © 2017, Winegard Company Rev1 2-17 2452381



METROSTAR® DIGITAL 360 OMNIDIRECTIONAL TV ANTENNA

Model MS-3005



SPECIFICATIONS

- Range of up to 35 miles*
- For all VHF and UHF channels
- May be installed inside or outside on any mast or pole
- Amplified
- Diameter of antenna head: 14.9"

*Antenna reception may vary based on transmitting antenna tower height, lobe pattern of the transmitter, height of the receiving antenna, weather conditions, and terrain on receiving path, including trees.

Register your product at
winegard.com/myantenna



NOTE: The amplified MS-3005 antenna now is powered by a 5 VDC power adapter (included). Previous models may have run on 12 VDC. If replacing a previous model, the power adapter and inserter will also need replaced.

WARNING: INSTALLATION OF ANTENNAS NEAR POWER LINES IS DANGEROUS. FOR YOUR SAFETY, FOLLOW THE INSTALLATION INSTRUCTIONS. TO PREVENT FIRE OR SHOCK HAZARD, DO NOT EXPOSE POWER SUPPLY TO RAIN OR MOISTURE.

2452381
Rev1 2-17

PARTS



INSTALLATION

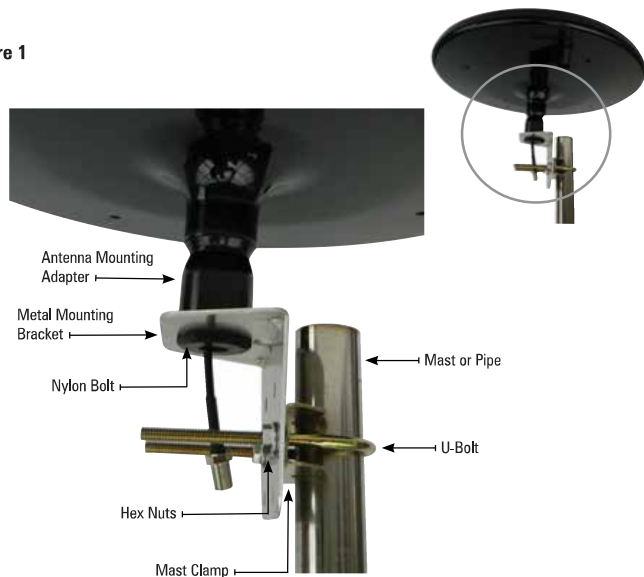
The MS-3005 antenna may be installed inside or outside on any mast or pole. **DO NOT MOUNT OVER CHIMNEY OPENING.**

STEP 1. Attach the antenna head to the black mounting adapter. You will need to twist the antenna head back and forth while pushing it onto the adapter. The head will snap tightly onto the adapter.

STEP 2. Insert the black nylon bolt into the mounting bracket so that the keyway is secured into the provided slot on the bracket. Proceed to screw the bolt onto the antenna adapter (see Figure 1 for direction of mounting bracket).

STEP 3. Insert "U" bolt thru mast clamp and mounting bracket and start hex nuts onto "U" bolt. See Figure 1. Slide mast thru "U" bolt and tighten hex nuts with 7/16" wrench.

Figure 1



ATTACHING DOWNLEAD COAX CABLE

If using the power supply, follow these steps.

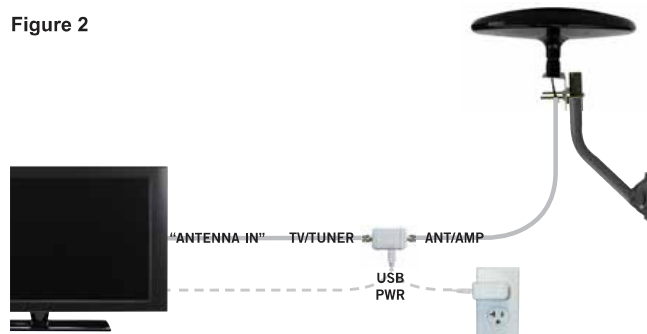
STEP 1. Attach "F" connector on download coax cable to the power inserter marked "ANT/AMP".

STEP 2. Attach "F" connector on coax cable from DTV, Digital Converter box, Distribution Amplifier, or splitter system to jack on power inserter marked "TV/TUNER". See Figure 2.

STEP 3. Connect one end of the supplied 3' USB cable to the USB PWR port on the power inserter. Connect the other end of USB cable to the USB port located on the TV **or** to the 110V wall wart adapter. See Figure 2.

TIP: If using a splitter to distribute signal to more than one TV, connect the USB cable to the 110V wall adapter instead of the TV USB port.

Figure 2



TIPS:

If splitting the signal to multiple TVs or combining with another signal source, it is strongly recommended that the power inserter be installed between the antenna and the splitter/combiner input. In this case, the cable connection from the "TV" jack of the power inserter goes to the splitter input or valid combiner input. Use splitters rated from 54-806 MHz or wider bandwidth (commonly 5-1000 MHz) for over-the-air television signal distribution.

Additional distribution/inline amplifiers must be installed FOLLOWING the TV output of the power inserter, NOT on the download cable line connecting to the ANT/AMP port. Check TV picture quality and antenna alignment prior to adding additional line amplifiers.

A maximum antenna-to-power inserter length of 150 feet RG-6 or 150 feet RG-59 is acceptable.