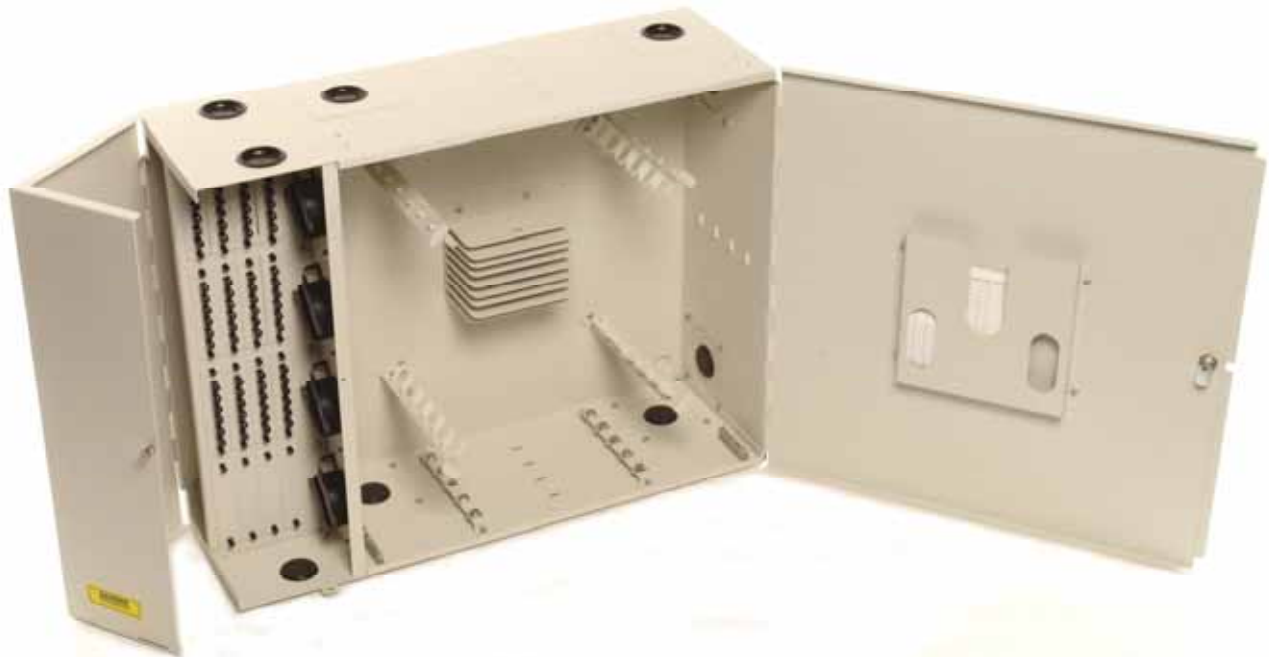




FWM312410

Fiber Distribution Unit (FDU)



Product Description

The Multilink *FWM312410* is a Wall Mount Fiber Distribution Unit designed to support patching and splicing in one unit. Subscriber compartment has capacity for (16) adapter panels, houses (4) slack storage spools, and screw latch door. The Network compartment has a lockable door, capacity for (8) splice trays, large slack storage loop, grounding bar, cable holds, and document pocket. The *FWM312410* is one of a family of units that support fiber terminations in wall mount applications.

General Specifications

Dimensions:	31" W X 24" H X 10" D
Panels:	(16) Multilink Adapter Panels (see individual panel capacities)
Splice trays:	(8) 2000-SSTA (24 single splices per tray)
Connections:	Subscriber Compartment, (6) 2.0" openings, (4) external, *(2) internal Network Compartment, (8) 2.0" openings, (6) external, *(2) internal *(2) 2.0" internal connections are between compartments
Material:	.063" Aluminum
Coating:	Electrostatic polyester powder coat paint, available in Off White only

Ordering Information

<u>Part Number</u>	<u>Description</u>
10-3800	FWM312410 (Off White Only)
70506K	2000-SSTA Aluminum Splice Tray
70709K	2020-SSTP Aluminum & Plastic Splice Tray

NOTE:

For available adapter panels refer to the Multilink Catalog for details.



Phone (440) 366-6966
Fax (440) 366-6802
E-mail engsupport@multilink1.com
24 Hour Voice Messaging
Worldwide Distribution
www.multilinkone.com