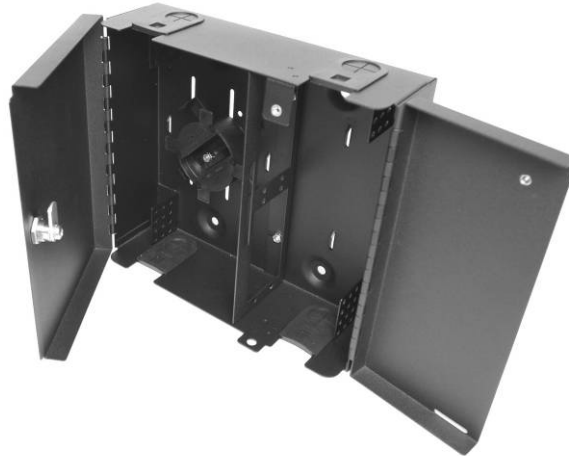


Multilink® FWM024X

Fiber Distribution Unit (FDU)



Product Description

The Multilink FWM024X is a compact wall mount fiber distribution unit designed to support patching and splicing in one unit. The unit has 4 adapter panel positions allowing for a wide variety of fiber termination connector types and is equipped with a double door maintaining separation and security for the Network and Distribution sides of the termination panels. The FWM024X is a member of a larger family of Fiber Distribution Units.

General Specifications

Dimensions: 10.8" H x 12.0" W x 4.0" D

Capacity: The unit can support patching or patching and splicing

- Terminations: (4) Multilink Termination Panels (see individual panel capacities),
- Splices: Up to 24 single fused fiber splices using two 1120-SSTA splice trays

Material: 16 Gauge Steel

Coatings: Electro statically applied polyester powder coat, available in black or white

Ordering Information

<u>Part Number</u>	<u>Description</u>
99024BK	FWM024X (Black)
99024K	FWM024X (Off White)
70902K	1120-SSTA Fiber Splice Tray

NOTE: For available adapter panels refer to the Multilink Catalog for details

Multilink®
Phone (440) 366-6966 Fax (440) 366-6802
E-mail engsupport@multilinkone.com
24 Hour Voice Messaging
Worldwide Distribution
SS-100-1133/January 2001
www.multilinkone.com