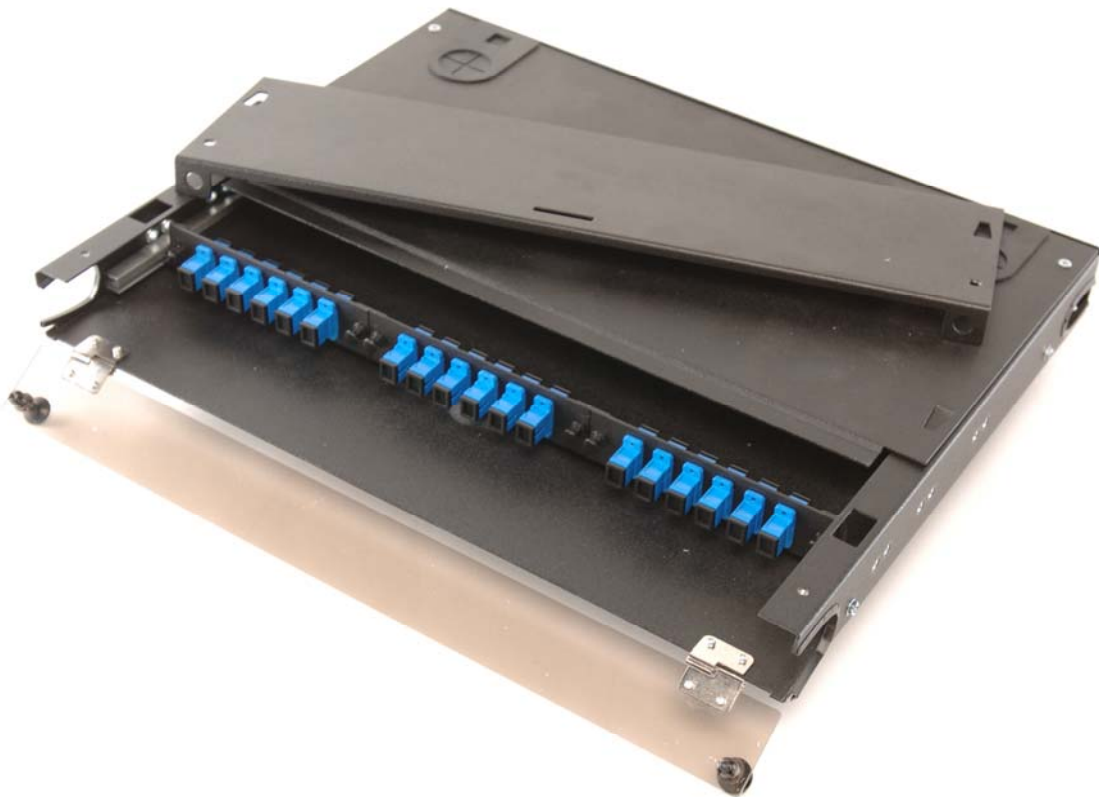




FRM-1RU-3X-TS

Fiber Distribution Unit (FDU)



Product Description

The Multilink *FRM-1RU-3X-TS* is a 1 Rack Unit (1RU), 3 termination panel, 19" and 23" rack mount fiber distribution unit designed to support patching and splicing in one unit. The unit has a slide out master panel with an integrated tray stop to prevent overextension of fiber cables. The unit also has a two-piece top and a swell latch door to allow for easy access to the adapter panels. The *FRM-1RU-3X-TS* is one of a family of units that support fiber terminations in rack mount applications.

General Specifications

Dimensions:	1.75" H x 17.0" W x 14.0" D
Panels:	(3) Multilink Adapter Panels (see individual panel capacities)
Splice trays:	(2) 2000-SSTA (24 single splices per tray)
Material:	16 Gauge Steel
Coating:	Electrostatic polyester powder coat paint, available in Black or Off White

Ordering Information

<u>Part Number</u>	<u>Description</u>
045-115-10	FRM-1RU-3X-TS (Black)
045-115-11	FRM-1RU-3X-TS (Off White)
70506K	2000-SSTA Aluminum Splice Tray
70709K	2020-SSTP Aluminum & Plastic Splice Tray

NOTE:

For available adapter panels refer to the Multilink Catalog for detail.



Phone (440) 366-6966
Fax (440) 366-6802
E-mail engsupport@multilink1.com
24 Hour Voice Messaging
Worldwide Distribution
www.multilinkone.com